

# MEDICA

## **EasyLyte**<sup>®</sup> [medicacorp.com](http://medicacorp.com)

*Na<sup>+</sup>/K<sup>+</sup>*

*Na<sup>+</sup>/K<sup>+</sup>/Cl<sup>-</sup>*

*Na<sup>+</sup>/K<sup>+</sup>/Li<sup>+</sup>*

*Na<sup>+</sup>/K<sup>+</sup>/Ca<sup>++</sup>/pH*



# EasyLyte<sup>®</sup>

easy inside and out

- **Easy to Use**

Simple, menu-driven, Yes/No prompted operation

Whole blood, serum, plasma or urine samples

Results printed automatically in less than 60 seconds

Automatic or on-demand calibration

Automatic probe wiping

- **Easy to Maintain**

All calibrants contained in convenient, disposable solutions pack

All waste collected in solutions pack

Disposable electrodes require no maintenance

Modular design makes maintaining analyzer simple and fast

- **Easy to Afford**

Low analyzer purchase price

Low cost per test

- **Available in four models:**

- **EasyLyte** Na<sup>+</sup>/K<sup>+</sup>

- **EasyLytePLUS** Na<sup>+</sup>/K<sup>+</sup>/Cl<sup>-</sup>

- **EasyLyteLithium** Na<sup>+</sup>/K<sup>+</sup>/Li<sup>+</sup>

- **EasyLyteCalcium** Na<sup>+</sup>/K<sup>+</sup>/Ca<sup>++</sup>/pH





EasyLyte

EasyLyte®

Solutions Pack  
Kit de soluções  
Confezione di soluzioni  
Lösungspackung  
Embalagem de Soluções  
Kit de soluciones

CE REF 2171

Medica Diagnostica S.p.A. Via Sesto  
Canto, 10 37060 (Verona) Italy

MEDICA  
02 294 051 51

Modular, maintenance-free electrodes



# Cl<sup>-</sup>



Pressing Yes or No buttons is all that is required to analyze serum, plasma or whole blood



Internal printer prints patient results, calibration values, quality control data, and results summaries, flagging abnormal results

# K<sup>+</sup>

Self-contained Solutions Pack contains liquid calibrants and collects all waste, eliminates sample contact



Capillary sampler is removable and disposable

## EasySampler

The modular EasySampler connects quickly to the EasyLyte Na/K, Na/K/Cl, and Na/K/Li analyzers, enhancing laboratory performance.

- 21 sample positions
- Dedicated Stat position
- Normal/Abnormal QC positions
- Optional auto-repeat of out-of-range values



Li+

pH

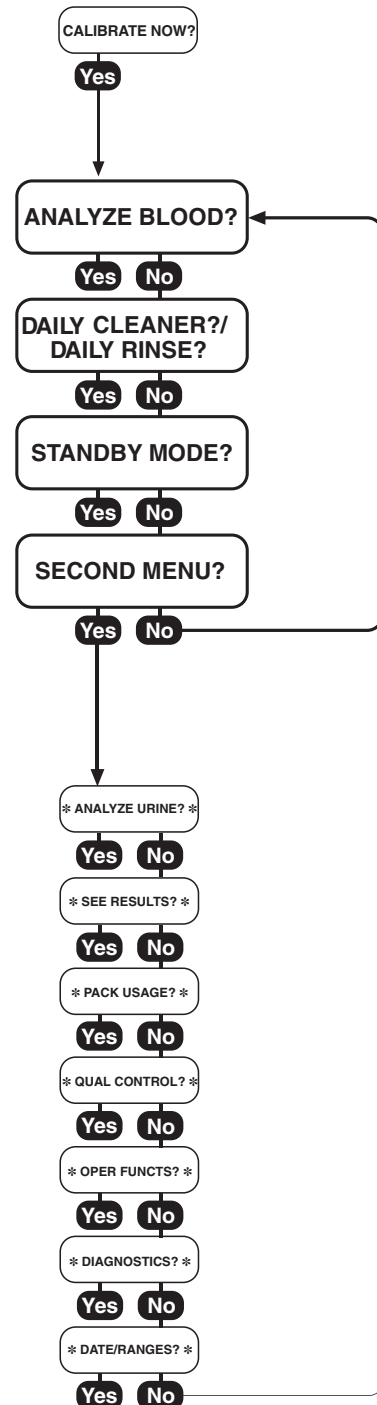
### Analyzer software insures ease of operation

Software computes quality control statistics, flags abnormal results, and monitors performance.

- Two button operation
- Automatic calibration
- User-friendly menu

Ca<sup>++</sup>

Na<sup>+</sup>



## Specifications

(Na<sup>+</sup>/K<sup>+</sup>, Na<sup>+</sup>/K<sup>+</sup>/Cl<sup>-</sup>, Na<sup>+</sup>/K<sup>+</sup>/Li<sup>+</sup>, Na<sup>+</sup>/K<sup>+</sup>/Ca<sup>++</sup>/pH)

# MEDICA

<b>CLIA Classification:</b>	Moderate Complexity														
<b>Sample Type:</b>	Whole Blood, Serum, Plasma or Urine														
<b>Sample Size:</b>	100 µL Whole Blood, Serum, Plasma, 60 µL capillary or 400 µL diluted (1:10) Urine														
<b>Method:</b>	Direct measurement by Ion Selective Electrode (ISE)														
<b>Measurement Range:</b>	<table><thead><tr><th>Blood</th><th>Urine</th></tr></thead><tbody><tr><td>Na<sup>+</sup>: 20 – 200 mmol/L</td><td>Na<sup>+</sup>: 25 – 1000 mmol/L</td></tr><tr><td>K<sup>+</sup>: 0.2 – 40 mmol/L</td><td>K<sup>+</sup>: 1.0 – 500 mmol/L</td></tr><tr><td>Cl<sup>-</sup>: 25 – 200 mmol/L</td><td>Cl<sup>-</sup>: 25 – 500 mmol/L</td></tr><tr><td>Li<sup>+</sup>: 0.2 – 5.0 mmol/L</td><td></td></tr><tr><td>Ca<sup>++</sup>: 0.1 – 6.0 mmol/L</td><td></td></tr><tr><td>pH: 6.0 – 8.0 Units</td><td></td></tr></tbody></table>	Blood	Urine	Na <sup>+</sup> : 20 – 200 mmol/L	Na <sup>+</sup> : 25 – 1000 mmol/L	K <sup>+</sup> : 0.2 – 40 mmol/L	K <sup>+</sup> : 1.0 – 500 mmol/L	Cl <sup>-</sup> : 25 – 200 mmol/L	Cl <sup>-</sup> : 25 – 500 mmol/L	Li <sup>+</sup> : 0.2 – 5.0 mmol/L		Ca <sup>++</sup> : 0.1 – 6.0 mmol/L		pH: 6.0 – 8.0 Units	
Blood	Urine														
Na <sup>+</sup> : 20 – 200 mmol/L	Na <sup>+</sup> : 25 – 1000 mmol/L														
K <sup>+</sup> : 0.2 – 40 mmol/L	K <sup>+</sup> : 1.0 – 500 mmol/L														
Cl <sup>-</sup> : 25 – 200 mmol/L	Cl <sup>-</sup> : 25 – 500 mmol/L														
Li <sup>+</sup> : 0.2 – 5.0 mmol/L															
Ca <sup>++</sup> : 0.1 – 6.0 mmol/L															
pH: 6.0 – 8.0 Units															
<b>Display Resolution:</b>	Na <sup>+</sup> : 0.1 mmol/L    K <sup>+</sup> : 0.01 mmol/L    Cl <sup>-</sup> : 0.1 mmol/L Li <sup>+</sup> : 0.01 mmol/L    Ca <sup>++</sup> : 0.01 mmol/L    pH: 0.005 units														
<b>Analysis time (blood)</b>	<table><thead><tr><th>Na<sup>+</sup>/K<sup>+</sup></th><th>Na<sup>+</sup>/K<sup>+</sup>/Cl<sup>-</sup></th><th>Na<sup>+</sup>/K<sup>+</sup>/Li<sup>+</sup></th><th>Na<sup>+</sup>/K<sup>+</sup>/Ca<sup>++</sup>/pH</th></tr></thead><tbody><tr><td>55 sec</td><td>55 sec</td><td>55 sec</td><td>60 sec</td></tr></tbody></table>	Na <sup>+</sup> /K <sup>+</sup>	Na <sup>+</sup> /K <sup>+</sup> /Cl <sup>-</sup>	Na <sup>+</sup> /K <sup>+</sup> /Li <sup>+</sup>	Na <sup>+</sup> /K <sup>+</sup> /Ca <sup>++</sup> /pH	55 sec	55 sec	55 sec	60 sec						
Na <sup>+</sup> /K <sup>+</sup>	Na <sup>+</sup> /K <sup>+</sup> /Cl <sup>-</sup>	Na <sup>+</sup> /K <sup>+</sup> /Li <sup>+</sup>	Na <sup>+</sup> /K <sup>+</sup> /Ca <sup>++</sup> /pH												
55 sec	55 sec	55 sec	60 sec												
<b>Urine Mode</b>	Yes                  Yes                  Yes                  No														
<b>Analysis time (urine)</b>	90 sec              90 sec              90 sec              N/A														
<b>EasySampler</b>	Yes                  Yes                  Yes                  No														
<b>Capillary Samples</b>	Yes                  Yes                  Yes                  No														
<b>Data Storage:</b>	Patient results — up to 128 samples QC results — up to 20 each Normal, Low, and High														
<b>Calibration:</b>	Automatic or On-Demand														
<b>Output:</b>	128 x 64 pixel graphic display 24 column thermal printer Serial port (RS-232), EasySampler port														
<b>Ambient Conditions:</b>	15–32°C (60–90°F), <85% humidity														
<b>Power:</b>	100-240 VAC 50/60 Hz, 0.8A														
<b>Size &amp; Weight:</b>	9.5"W x 16.5"H x 8.0"D (24 cm W x 42 cm H x 20 cm D) 13 lbs. (5.8 kg)														

Medica Corporation  
5 Oak Park Drive  
Bedford, MA 01730-1413  
USA

USA 800 777 5983

Global +1 781 275 4892

Fax 781 275 2731

medicacorp.com